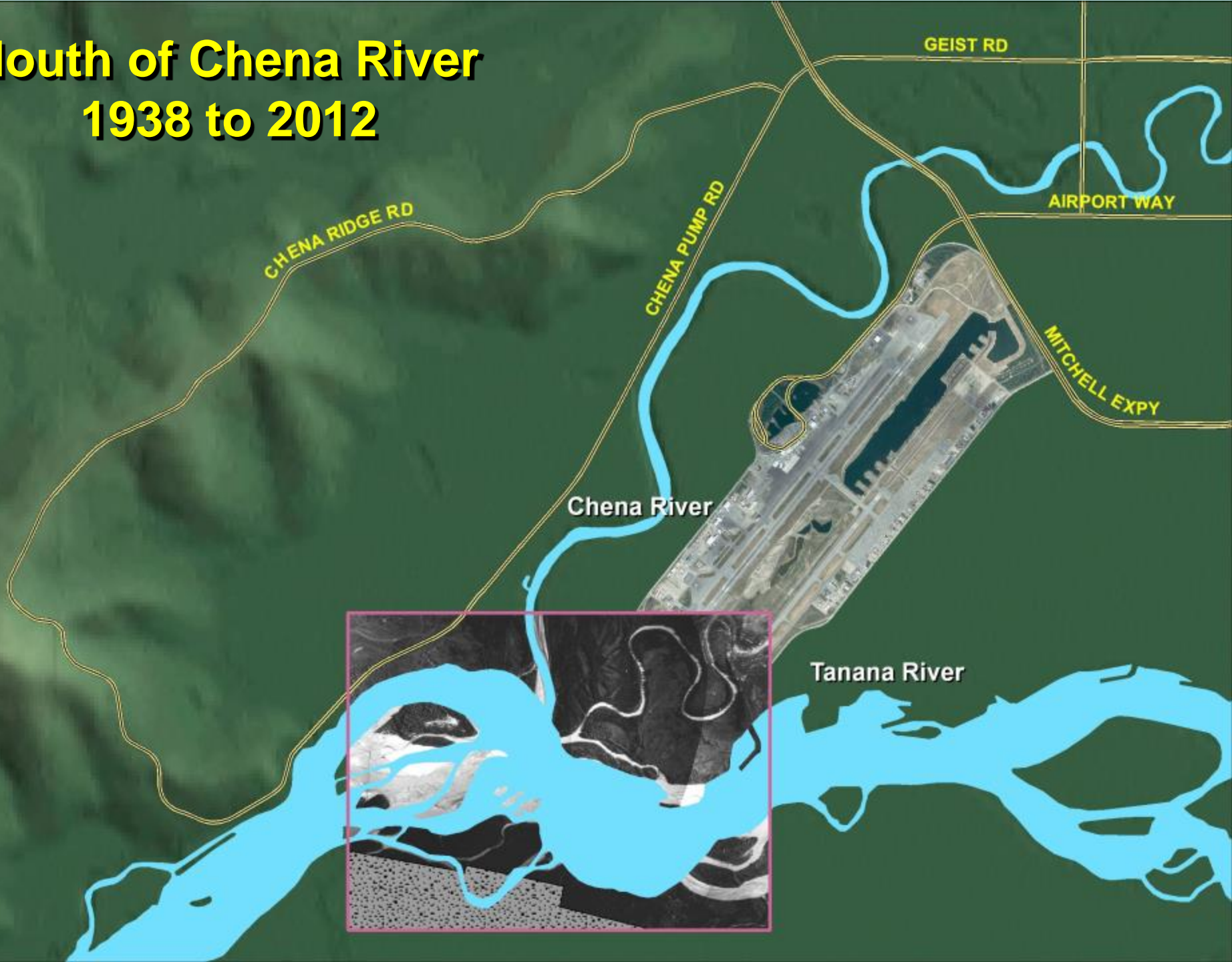


Mouth of Chena River 1938 to 2012



CHENA RIDGE RD

GEIST RD

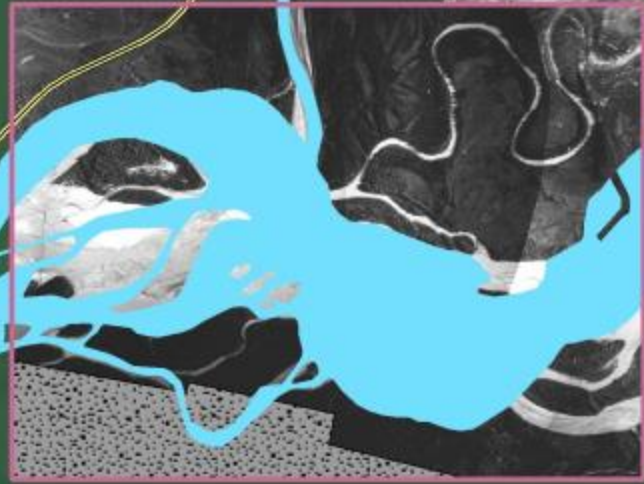
CHENA PUMP RD

AIRPORT WAY

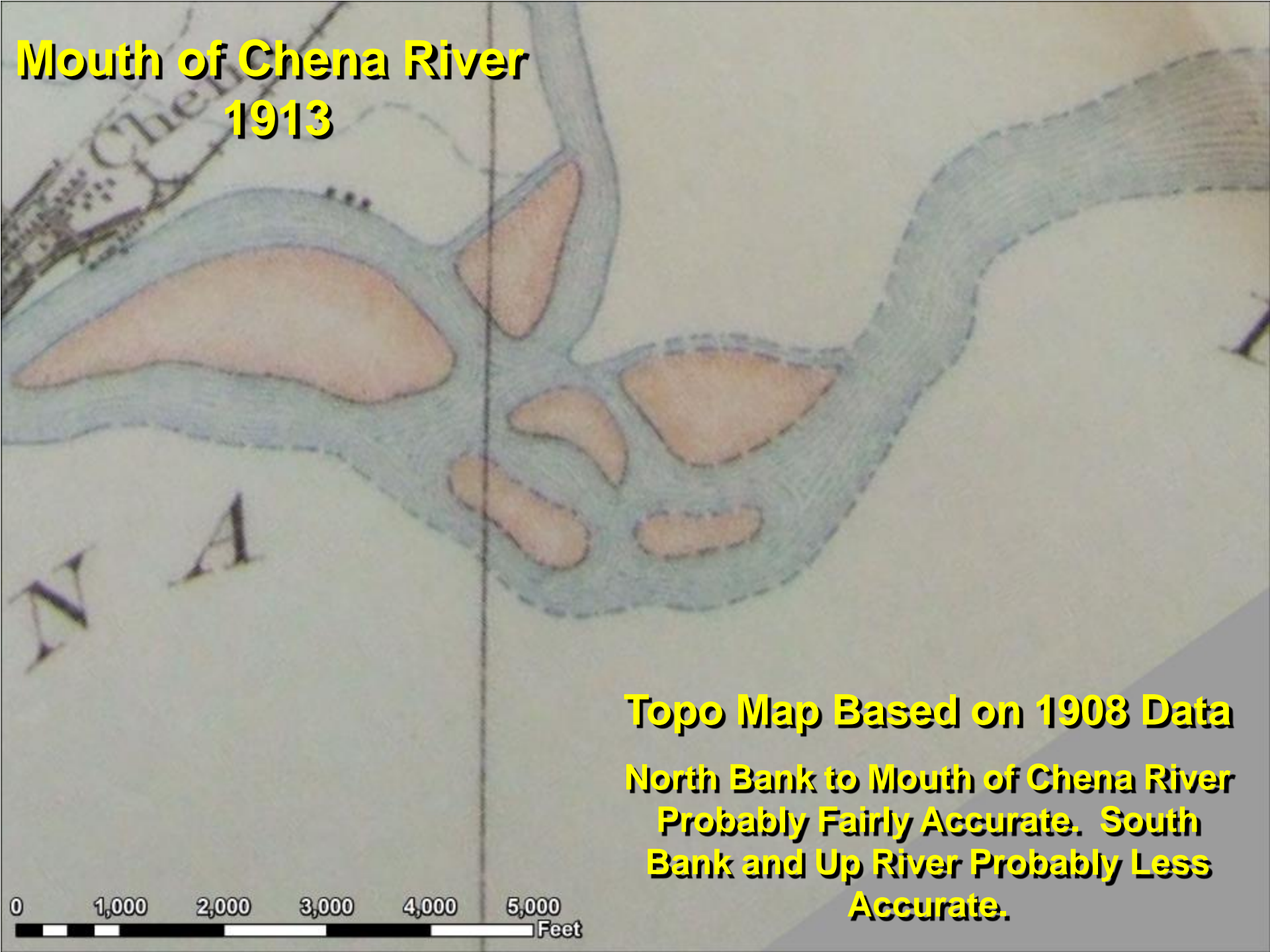
MITCHELL EXPY

Chena River

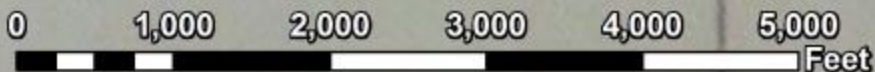
Tanana River



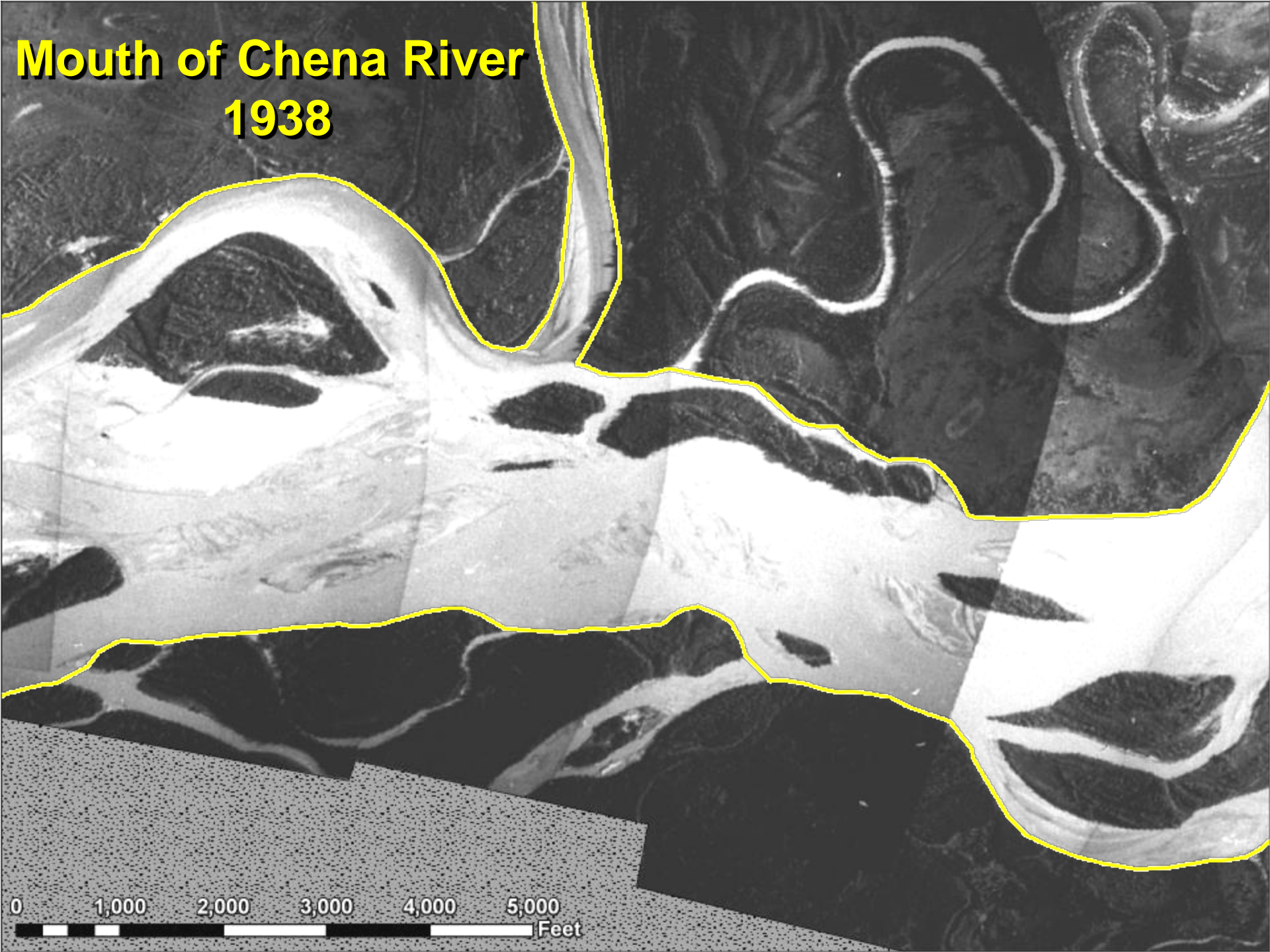
Mouth of Chena River 1913



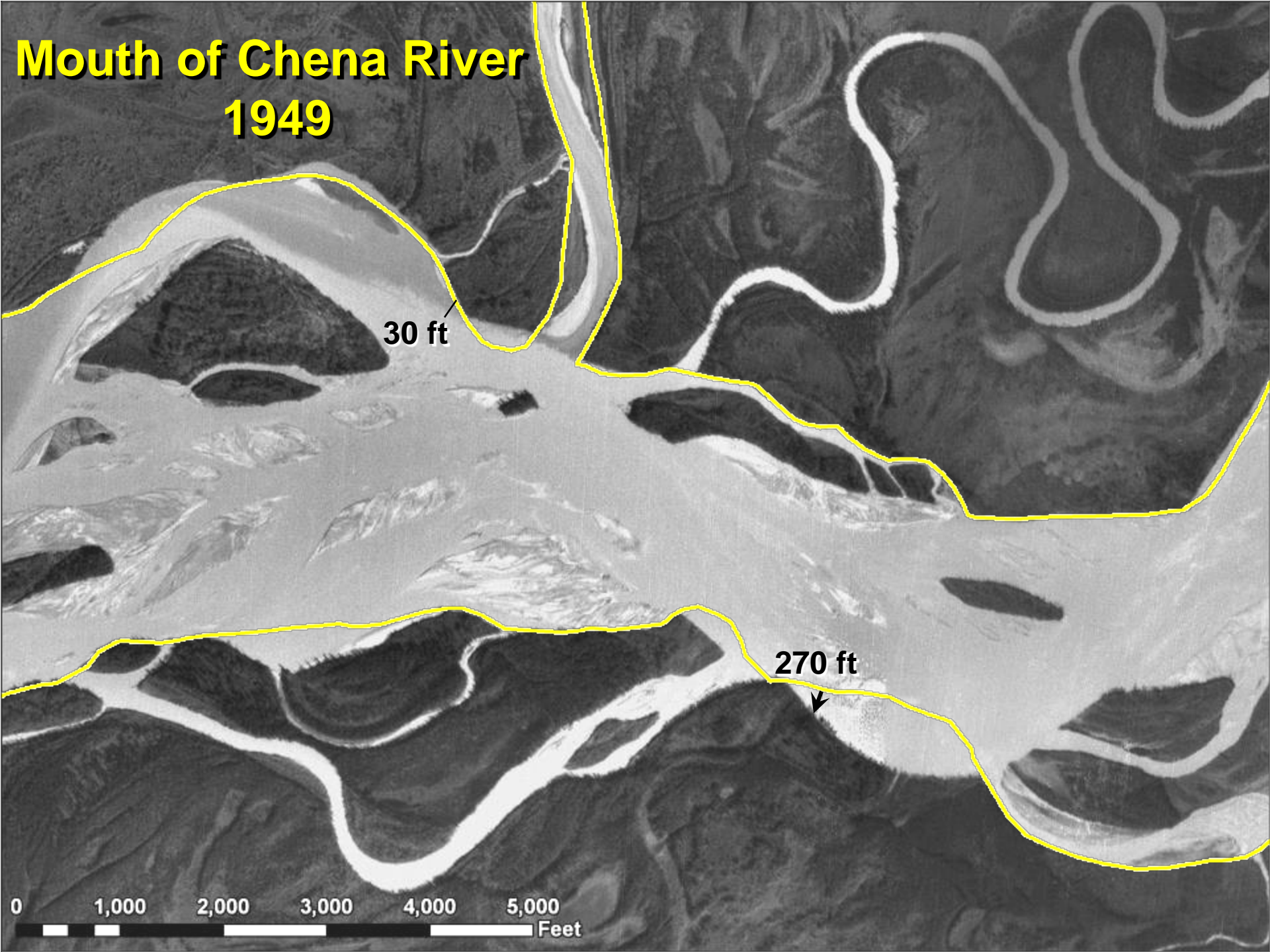
**Topo Map Based on 1908 Data
North Bank to Mouth of Chena River
Probably Fairly Accurate. South
Bank and Up River Probably Less
Accurate.**



Mouth of Chena River 1938



Mouth of Chena River 1949



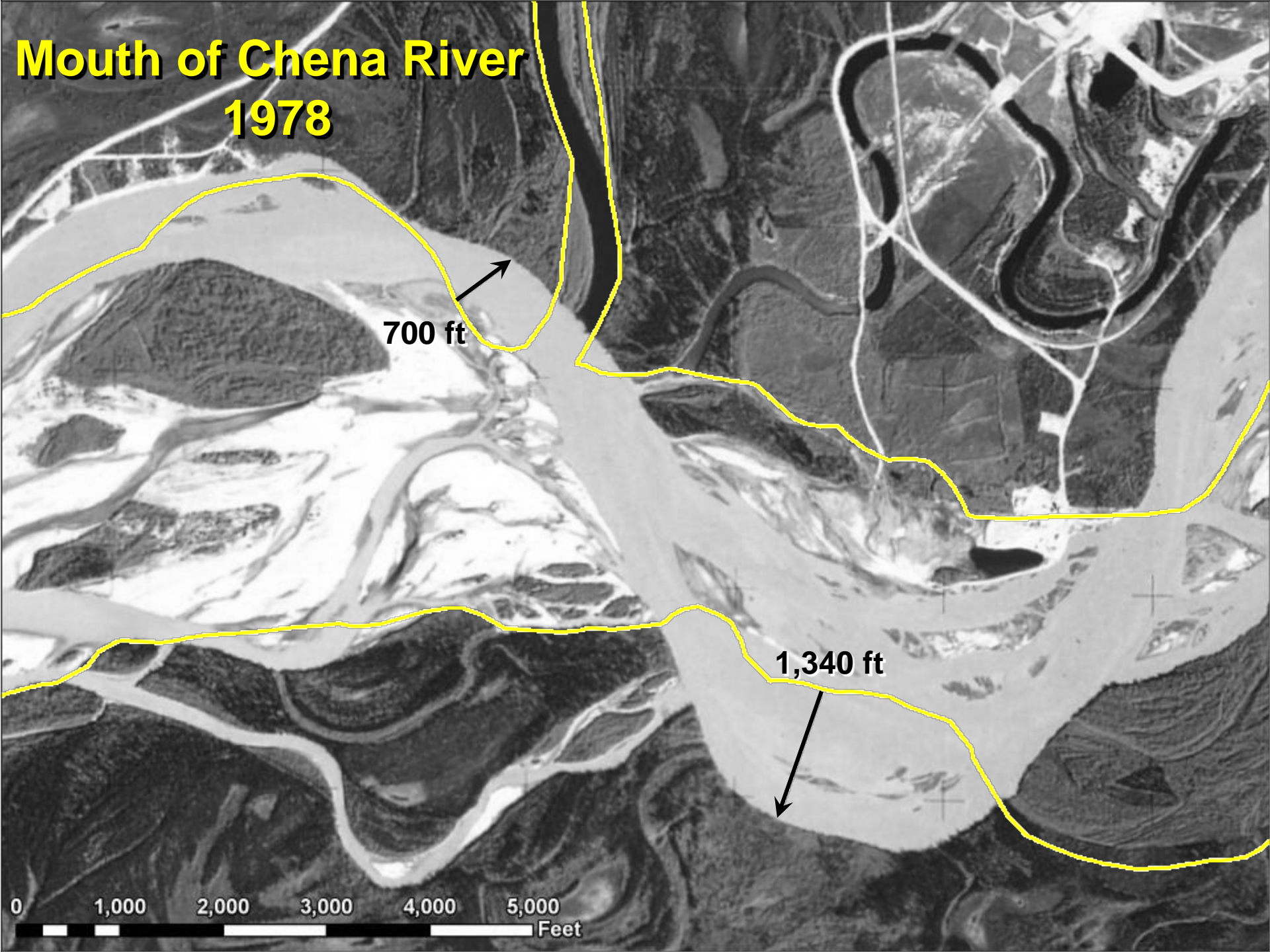
Mouth of Chena River 1967

490 ft

910 ft

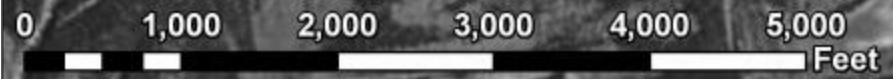


Mouth of Chena River 1978



700 ft

1,340 ft



Mouth of Chena River 1986

910 ft

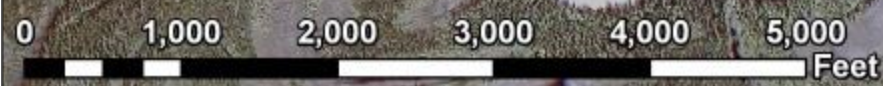
1,370 ft



Mouth of Chena River 2002

1,250 ft

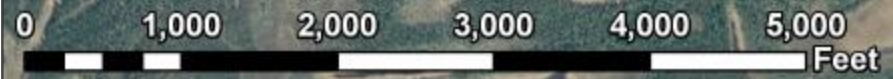
1,760 ft



Mouth of Chena River 2007

1,330 ft

2,050 ft



Mouth of Chena River 2012

1,335 ft

2,050 ft

